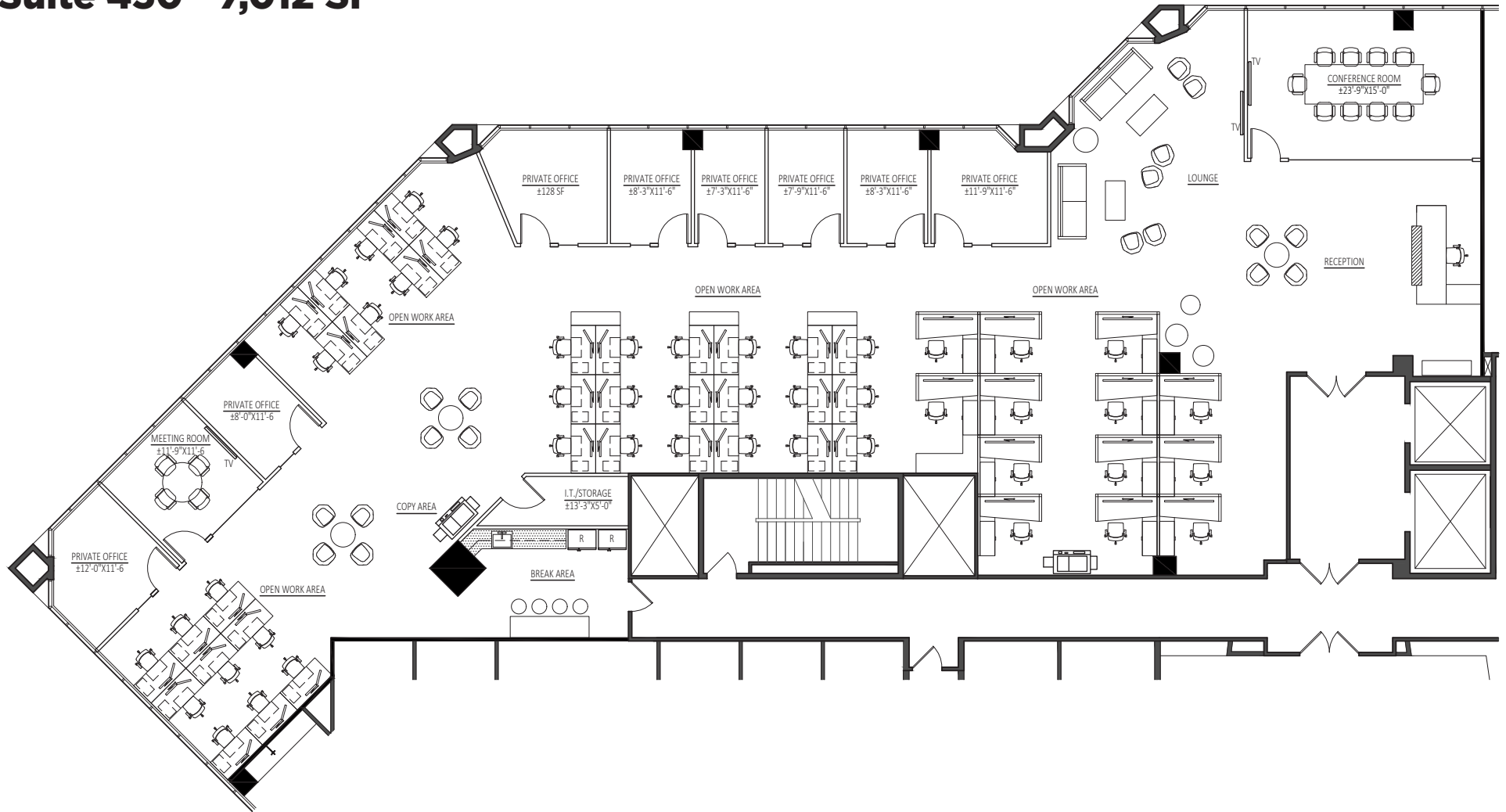


5120 GOLDFLEAF CIRCLE

Suite 450 - 7,012 SF



Wateridge.LA

FOR OFFICE LEASING INFORMATION,
PLEASE CONTACT:

FOR RETAIL LEASING INFORMATION,
PLEASE CONTACT:

LPCWEST
LINCOLN PROPERTY COMPANY

KENT S. HANDLEMAN
khandleman@lpc.com
213 542 8246

DOUGLAS J. BROWN
dbrown@lpc.com
213 542 8247

RICK BUCKLEY
rbuckley@larealtypartners.com
310 407 3422

ZACHARY A. CARD
zachary.card@cbre.com
310 550 2542

